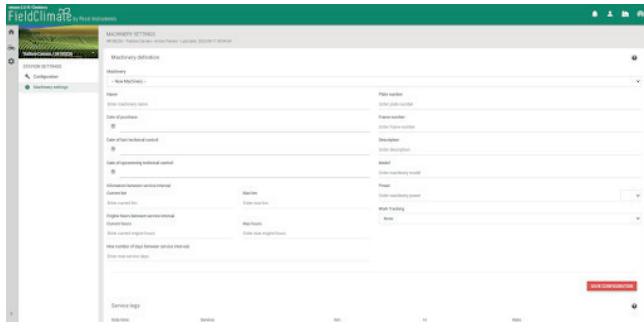


On the **Station settings** page you can configure your iMETOS. You can assign your custom name, the time zone and define your iMETOS WorkTrack and machinery settings.



## FAQ

There aren't any so far. If you encounter any problems with your iMETOS WorkTrack, contact our support team at: [support@metos.at](mailto:support@metos.at).



For full user manuals please visit:  
[metos.at/manuals](https://metos.at/manuals)



Visit [metos.at/terms-of-use/](https://metos.at/terms-of-use/) to view legal information for Pessl Instruments products and services.

**Pessl Instruments GmbH**  
Werksweg 107, 8160 Weiz, Austria  
[office@metos.at](mailto:office@metos.at)  
+43 317 255 21



ENGLISH

# METOS<sup>®</sup>

BY PESSL INSTRUMENTS

## iMETOS WorkTrack

### USER MANUAL

Version 1.0, 07-2022

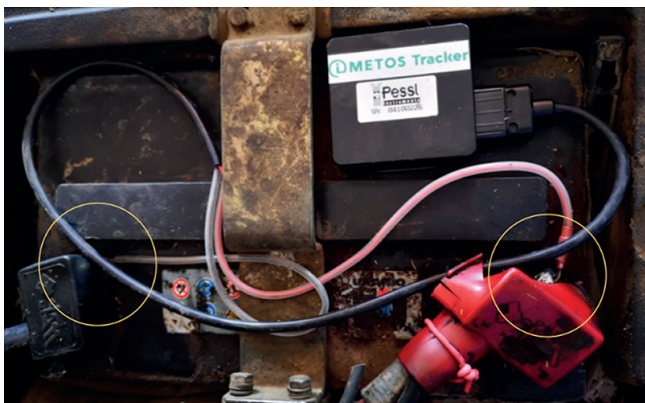


Thank you for choosing the iMETOS WorkTrack to have your fleet always under full remote control. You will know exactly when your drivers are coming in and going out. On our FieldClimate platform, you see your vehicles and have all data stored about where and which operations you have running. Together with your connected METOS<sup>®</sup> weather station, you can see the application of wet or dry fertilizer or chemical as well as any farm delivery, grain transport, over-the-road trucking, seed delivery, and equipment rental on your mobile phone/iPad or desktop.

iMETOS WorkTrack connects to all farming equipment automatically and swiftly. Companies that have implemented the iMETOS WorkTrack have improved their efficiency by 25-30% while decreasing fuel consumption by 15%. Most companies have seen these benefits within their first 30 days of activation.

## INSTALLING YOUR iMETOS WorkTrack

1. To connect your iMETOS WorkTrack, locate and open the battery compartment of your tractor. This is usually near the engine or sometimes underneath the seat.
2. Connect the iMETOS WorkTrack to the battery terminals (yellow circles in the picture below) of your tractor. One is marked positive (red +), the other negative (black -). Connect the red cable to the positive (+) terminal of the battery and the black cable to the negative terminal of the battery. Never connect the red cable to the negative battery terminal.



3. iMETOS WorkTrack will start to work immediately once you start the tractor.

### NOTES

- iMETOS WorkTrack must be mounted with the serial number sticker facing up
- It's recommended to place iMETOS WorkTrack device far from radio, speakers or alarm systems.
- iMETOS WorkTrack:
  - must be placed so its state is as horizontal as possible.
  - should be firmly fixed to the surface or cables.
  - should not be fixed to heat emitting or to moving parts.
- In case a SIM card is not included, it should be inserted in the module while the connector is plugged off (while the module has no power).

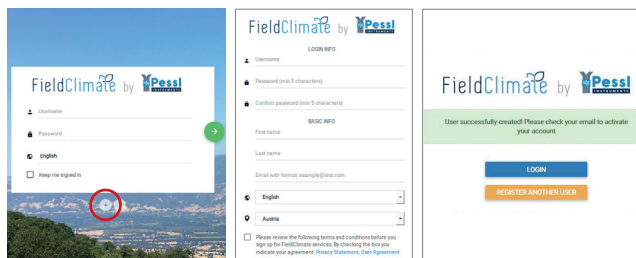
## TECHNICAL SPECIFICATIONS

<b>Connectivity</b>	LTE & 2G module for multi-regional use; Cat M1/ NB1 deployed bands: 2, 3, 4, 5, 8, 12, 13, 20, 26*, 28*; EGPRS quad-band, 850/900/1800/1900 MHz (* roaming bands) with internal high gain antenna
<b>GNSS</b>	GPS, GLONASS, GALILEO, BEIDOU, accuracy < 3m, internal high gain GNSS antenna
<b>Housing</b>	UV resistant polycarbonate plastic (Protection class IP67)
<b>Power</b>	(+6...+30) V DC via car power plug or with internal capacitor with solar panel
<b>Communication</b>	It uses UDP protocol for data delivery to FieldClimate platform
<b>Dimensions</b>	72,5 x 73 x 27 mm

## USE YOUR iMETOS WorkTrack

To start using services we provide, you need to register on the FieldClimate platform, which gives you access to the data in graphs or tables. FieldClimate also provides a powerful decision support system for growing your crops (plant protection, irrigation, sowing, harvesting, fertilizing).

### REGISTER AS A NEW USER ON FieldClimate.com



1. Go to [fieldclimate.com/](http://fieldclimate.com/)
2. Fill-in personal data
3. Activate user account by clicking on the activation link sent to your email

### ADD YOUR iMETOS DEVICE TO YOUR ACCOUNT

Once registered, you can login to FieldClimate.com. To add your iMETOS device, click on the icon in the top right corner **User Menu > Add/Remove station**. It will ask you for a Station Serial number (SN) and a station key. This information is found on the

Serial: 00000000  
Key 1: xdes7  
Key 2: g25am  
Pessl Instruments Ges. n. b. H.

silver sticker (in the figure) which came with your iMETOS station. Key 1 gives you full (admin) access and enables you to change all the settings and set up the iMETOS (e.g. data transfer interval, SMS warning, etc.); with Key 2 the user is not allowed to change the station parameters, but you can access all the weather data.

**+** Add station
**-** Remove station

Use the Station ID and key that came with your iMetos station to add it to your list. Use key 1 if you want to be able to change station configuration settings or key 2 if you want read-only access.

Station ID

Station key

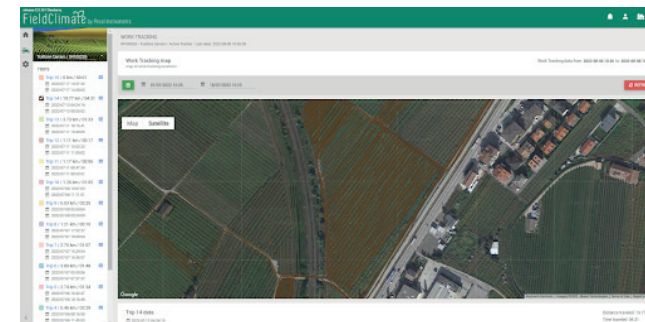
Station name

ADD STATION
CANCEL

### THE iMETOS DASHBOARD, TRIPS DATA AND SETTINGS

In the new **Dashboard**, with a widgeted structure, the user can manage the fast access to the services of highest interest. On the top right corner, **Station/Device List** allows you to choose among all the iMETOS devices and select a single one.

On the left side, the **Tracker** page displays the position and data measured by your device. Data can be viewed in the map and tables. You can access the structured menu, which allows you to select the trip and see the distance, speed, time, coordinates travelled and battery levels.



You can connect with other Pessl Instruments services like the high-precision localized **weather forecast** and plant **disease models** on an iMETOS weather station to have the complete scenario under control. To activate them please contact your local distributor or [license@metos.at](mailto:license@metos.at).