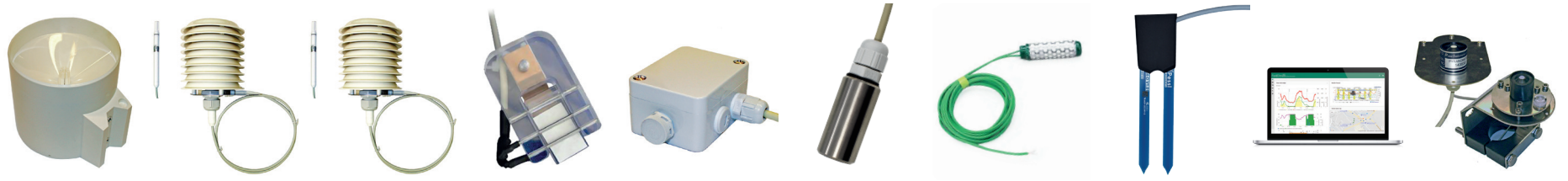


Pessl Instruments' Crop Solutions



	<u>PRECIPITATION</u> <i>pages 124-125*</i>	<u>AIR TEMPERATURE</u> <i>pages 104-109*</i>	<u>RELATIVE HUMIDITY</u> <i>pages 104-109*</i>	<u>LEAF WETNESS</u> <i>pages 122-123*</i>	<u>BAROMETRIC PRESSURE</u> <i>pages 154-155*</i>	<u>SOIL TEMPERATURE</u> <i>pages 112-113*</i>	<u>SOIL WATER TENSION</u> <i>pages 132-133*</i>	<u>SOIL WATER CONTENT (VWC)</u> <i>pages 126-127*</i>	<u>ET₀</u>	<u>SOLAR RADIATION</u> <i>pages 150-153*</i>
ALMOND	x	x	x	x						
APPLE	x	x	x	x						
APRICOT /PLUM/ PRUNE/MIRABELLE	x	x	x	x						
ASPARAGUS		x	x	x						
AVOCADO	x	x	x	x						
BANANA	x	x	x	x					x	
BEETROOT		x	x	x						
BLUEBERRY	x	x	x	x						
BLACKBERRY	x	x	x	x						
CABBAGE/ OILSEED BRASSICA SP.	x	x	x	x		x				x
CARROT/BEETROOT		x	x	x						
CHERRY	x	x	x	x			x			
CHILLI	x	x	x	x						
CITRUS	x	x		x						
CORN	x	x	x	x						
COFFEE	x	x	x	x						
COTTON	x	x	x	x						x
CUCUMBER	x	x	x	x						x

ELDERBERRY	x	x	x	x					
EGGPLANTS	x	x	x	x					
ELDERBERRY	x	x	x	x					
HAZELNUT	x	x		x					
HEMP	x	x	x	x		x			
KIWI		x	x	x					
LETTUCE	x	x	x	x					
LINUM	x	x	x	x		x			
MANGO	x	x	x	x					
MELON/ CUCUMBER/ ZUCCHINI/ PUMPKIN	x	x	x	x					x
MIRABELLE	x	x	x	x					
NECTARINES	x	x	x	x					
OILSEED RAPE/ CANOLA	x	x	x	x		x			
OLIVE	x	x	x	x					
ONION	x	x	x	x					
PEAR AND QUINCE	x	x	x	x					
PAPRIKA /PEPPER/ EGGPLANTS	x	x	x	x					
PEACH	x	x	x	x					
POMEGRANATE	x	x	x	x					
PISTACHIO	x	x	x	x					
PLUM	x	x	x	x					
PRUNE	x	x	x	x					
PUMPKIN	x	x	x	x					x
POTATO	x	x	x	x		x		x	x
PULSES	x	x	x	x		x			

RAPESEED	X	X	X	X		X			
RASPBERRY	X	X	X	X					
RICE	X	X	X	X					X
SOYA	X	X	X	X		X			X
STRAWBERRY	X	X	X	X					
SUNFLOWER	X	X	X	X		X			
SUGARBEET	X	X	X	X					
SUGARCANE		X							
TOBACCO	X	X	X	X					X
TOMATO - COVERED		X	X	X					
TOMATO - OPEN FIELD	X	X	X	X					
TOMATO - WARM CLIMATE OPEN FIELD	X	X	X	X					
TURF GRASS	X	X	X	X					X
VITICULTURE	X	X	X	X					
WALNUT/ ALMONDS/ PISTACHIOS	X	X	X	X					
WHEAT AND BARLEY	X	X	X	X					X
ZUCCHINI	X	X	X	X					X

* **Note:** Page numbers refer to technical catalogue.

